

# AXIS 360

COMMERCIAL REAL ESTATE

3001 ½ Gill St.  
Suite A  
Bloomington, IL  
61704  
[axis360.co](http://axis360.co)



## BUILDING SIZE

6,092 SF

## YEAR BUILT

1963

## LEASE TYPE

Modified Gross

## AVAILABLE SPACE

2,180 SF + full basement

## LEASE RATE

\$2,800/month

## PARKING

6 spaces attached + street

## ZONING

D2

## 217 E. WASHINGTON STREET, BLOOMINGTON

### FORMER LAW OFFICE | LEASE

Make a bold statement by leasing this one-of-a-kind 1960's office building previously occupied as a law office. Whether you are a creative agency, a boutique firm, or any business seeking a distinctive workspace that reflects your brand's personality, this property offers a great opportunity.

Nestled along E. Washington Street in Downtown Bloomington directly adjacent to the Castle Theater, this building offers convenience and accessibility. Benefit from close proximity to the Law & Justice Center, government offices of the City of Bloomington and McLean County, as well as, many great specialty stores, bars, restaurants, and art galleries.

This office has a reception, private offices, conference rooms, law library and a full dry basement with additional restrooms, break room, storage and more. And a Downtown office wouldn't be complete without a walk in safe that is a great place to store files.

Parking is available in attached lot, as well as, nearby street parking.

The statements and figures herein, while not guaranteed, are secured from sources we believe authoritative. This information is for illustrative purposes only.

**Meghan O'Neal-Rogozinski, CCIM**

[meghan.oneal@axis360.co](mailto:meghan.oneal@axis360.co)

309-532-1808

**Michael O'Neal**

[moneal@axis360.co](mailto:moneal@axis360.co)

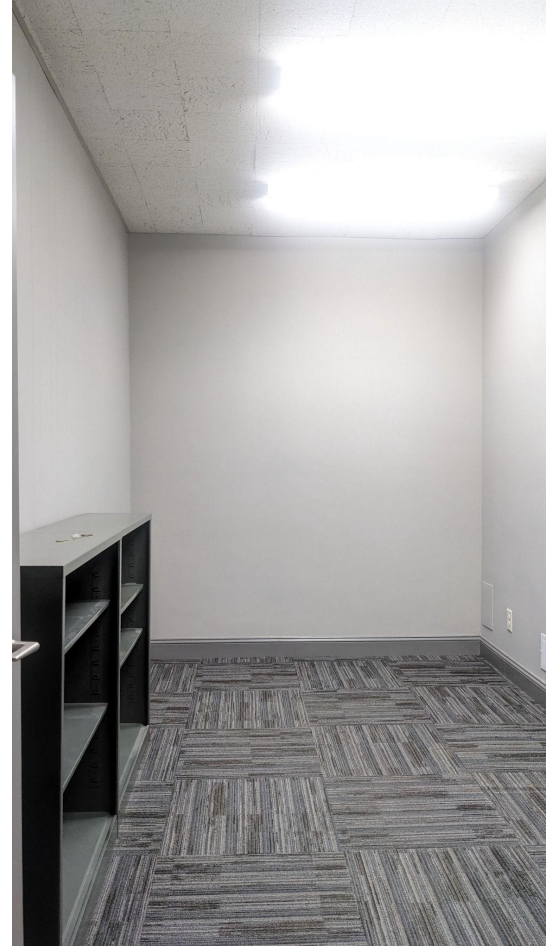
309-530-3591





3001 1/2 Gill St. Suite A  
Bloomington, IL 61704  
[axis360.co](http://axis360.co)

# 217 E. Washington St. Bloomington, IL



**Meghan O'Neal-Rogozinski, CCIM**  
[meghan.oneal@axis360.co](mailto:meghan.oneal@axis360.co)  
309-532-1808

**Michael O'Neal**  
[moneal@axis360.co](mailto:moneal@axis360.co)  
309-530-3591

