



3001 ½ Gill St.
Suite A
Bloomington, IL
61704
axis360.co



BUILDING SIZE
15,312 SF

YEAR BUILT
1962

LEASE TYPE
Full Gross

AVAILABLE SPACE
3,625 SF

LEASE RATE
\$14.00/SF

UTILITY CHARGE
Included in rent

BUILDING TENANTS

121 MAIN STREET, BLOOMINGTON

OFFICE SUITE | 2ND FLOOR | **LEASE**

SUITE 200 | 3,625 SF

Second floor office suite available for lease. The full floor is available for a single tenant. Previously occupied as an attorney's office, the space has a perimeter of private office spaces and conference room, open/work area/reception, two (2) restrooms, breakroom, data storage and secured storage areas inclusive in suite. Building has elevator access. Parking adjacent to building.



Law Office of
Jack Vieley

The statements and figures herein, while not guaranteed, are secured from sources we believe authoritative. This information is for illustrative purposes only.

Meghan O'Neal-Rogozinski, CCIM
meghan.oneal@axis360.co
309-532-1808

Michael O'Neal
moneal@axis360.co
309-530-3591

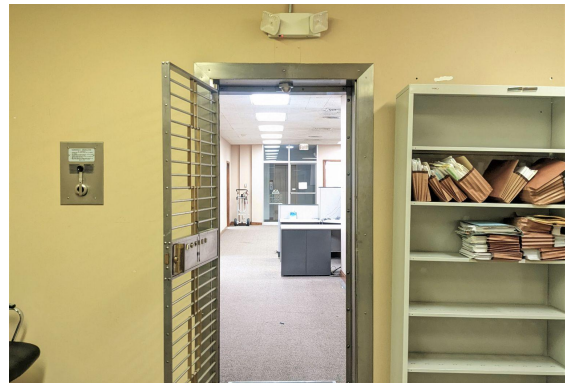
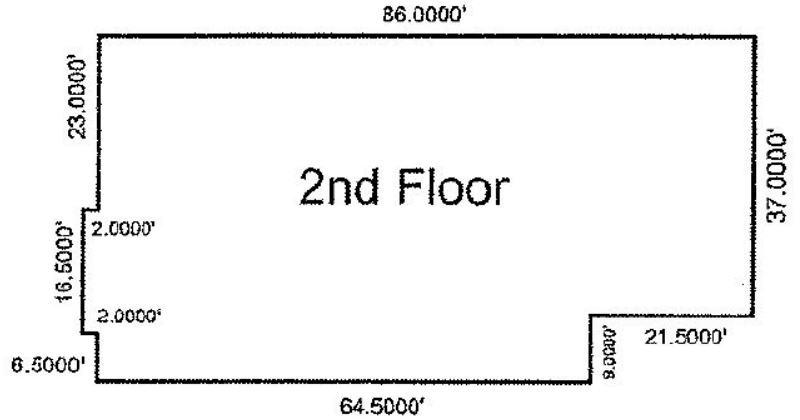




3001 1/2 Gill St. Suite A
Bloomington, IL 61704

axis360.co

121 N. Main Street Bloomington, IL



Meghan O'Neal-Rogozinski, CCIM

meghan.oneal@axis360.co

309-532-1808

Michael O'Neal

moneal@axis360.co

309-530-3591

